

**TOWN OF BERRY  
RESOLUTION 2021-2  
TO ADOPT WARD PLAN AND TO COMBINE MUNICIPAL WARDS  
FOR VOTING PURPOSES**

WHEREAS, Wisconsin Statutes requires all cities, villages and towns with a population of 1,000 or more to establish municipal wards based on the results of the 2020 census.

WHEREAS, Section 59.10(3)(b) of the Statutes requires that each county board adopt and transmit to each municipal governing body in the county a tentative county supervisory district plan, dividing the county into districts and designating the approximate location and population of each ward proposed to effectuate the division of the county into districts.

WHEREAS, these laws require that each municipality designate by consecutive whole number, geographical description and population, the various wards to be created within the municipality.

NOW, THEREFORE BE IT RESOLVED, that the Town of Berry adopts the wards described as follows:

<u>Ward</u>	<u>Location</u>	<u>Population</u>	<u>Polling Place</u>
1	All areas West of County Road KP	459	Town Hall, 9046 State Road 19, Mazomanie
2	All areas East of County Road KP	709	Town Hall, 9046 State Road 19, Mazomanie
	Total Population	1168	

BE IT FUTURE RESOLVED, that the above ward boundaries are outlined and identified on the attached map along with a list of census block numbers in each ward, which is incorporated and made a part hereof.

BE IT FURTHER RESOLVED, that Wards 1 and 2 created above are hereby combined for voting purposes, so as to share the common polling place indicated, and such combined wards shall use common ballot boxes and ballots or voting machines and separate returns shall not be maintained for the combined wards at any election, except where separate ballots are required under Section 5.58 to 5.64 of the Statutes, and separate ballots or voting machines shall be maintained for any electors of one or more of the combined wards who are ineligible to vote for any office or referendum for which other electors in the combined wards may vote;

BE IT FINALLY RESOLVED, that upon passage, a copy of this resolution shall be filed with the Town Clerk, who shall transmit a copy of the ward plan and this resolution to the County Clerk within five days of its adoption and that this resolution shall remain in effect for each election until modified or rescinded, in accordance with Statute, or until a new division is made following the next federal decennial census.

Adopted this 15<sup>th</sup> day of November 2021.

Attest: Brenda Kahl  
Brenda Kahl, Clerk/Treasurer

Anthony Varda  
Anthony Varda, Chair

Posted: November 16, 2021

David Evert  
David Evert, Supervisor

Michael N. Statz  
Michael Statz, Supervisor

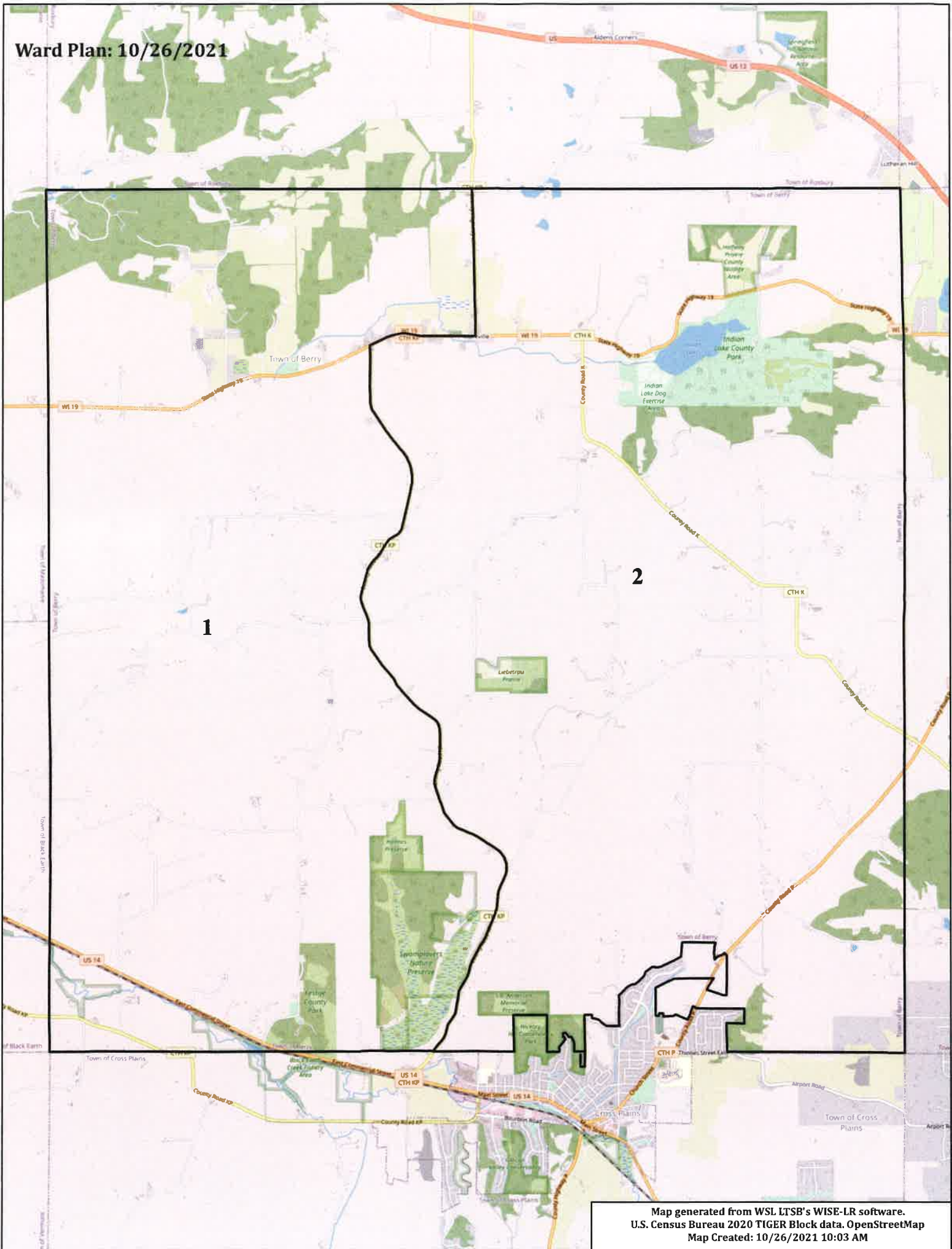
A handwritten signature in blue ink, appearing to read "Christine Molling", is written above a horizontal line.

Christine Molling, Supervisor

---

Duane Haag, Supervisor

**Ward Plan: 10/26/2021**



Census Block Number	Ward
550250129002026	1
550250129002027	1
550250129002028	1
550250129002029	1
550250129002030	2
550250129002031	2
550250129002035	2
550250129002036	2
550250129002039	2
550250129002040	2
550250129002041	2
550250129002042	2
550250129002043	2
550250129002044	2
550250129002045	2
550250129002046	2
550250129002047	2
550250129002048	2
550250129002049	2
550250129002050	1
550250129002051	1
550250129002052	1
550250129002053	2
550250129002054	2
550250129002055	2
550250129002056	2
550250129002057	2
550250129002058	2
550250129002059	2
550250129002060	2
550250129002061	2
550250129002062	2
550250129002063	2
550250129002064	2
550250129002065	2
550250129002066	2
550250129002067	1
550250129002068	1
550250129002069	1
550250129002070	1
550250129002071	1
550250129002072	1
550250129002073	1
550250129002074	1
550250129002075	2
550250129002076	2

Census Block Number	Ward
550250129002077	2
550250129002078	2
550250129002080	2
550250129002081	2
550250129002082	1
550250129002083	1
550250129002085	1
550250129003050	1
550250129003051	1
550250129003052	1
550250129003053	1
550250129003054	1
550250129003055	1
550250129003056	1
550250129003057	1
550250129003062	1
550250129003063	1
550250130001002	1
550250130001003	1
550250130001004	1
550250130001000	2
550250130002000	2
550250130002001	2
550250130002004	2
550250130001055	2